

Level I

A. TECHNIQUE AND THEORY (Scales and Arpeggios)

GOALS

- ❖ Become more familiar with the basic fingerings on one size of recorder: soprano, alto or tenor.
- ❖ Increase finger dexterity by learning to play simple major and minor scales and arpeggios.
- ❖ Develop the ability to use more than one kind of articulation.
- ❖ Distinguish between major and minor tonalities aurally and in notation.
- ❖ Improve breath control and tone quality through the use of long-tone scales.
- ❖ Develop competence in simple music notation by knowing the key signatures and names of notes in simple major and minor scales. Be able to notate these scales.

1. Play these scales and arpeggios from memory using tongued legato and staccato articulations. Practice in quarter notes up and down one octave at a moderate tempo. Strive for a steady tempo, careful articulation and accuracy of fingering with good intonation and tone quality.

Major and minor scales and arpeggios

M.M. ♩ = 80

C Major

Musical notation for C Major scale, Soprano/Alto parts. The notation is in 4/4 time and consists of two staves. The Soprano staff (S/T) starts on C4 and the Alto staff (Alto) starts on C3. Both staves show the scale ascending and descending in quarter notes, with a repeat sign and a 3/4 time signature change for the final measure.

F Major

Musical notation for F Major scale, Soprano/Alto parts. The notation is in 4/4 time and consists of one staff. The Soprano/Alto staff (S/A/T) starts on F4 and shows the scale ascending and descending in quarter notes, with a repeat sign and a 3/4 time signature change for the final measure.

G Major

Musical notation for G Major scale, Soprano/Alto parts. The notation is in 4/4 time and consists of one staff. The Soprano/Alto staff (S/A/T) starts on G4 and shows the scale ascending and descending in quarter notes, with a repeat sign and a 3/4 time signature change for the final measure.

a natural minor



d natural minor



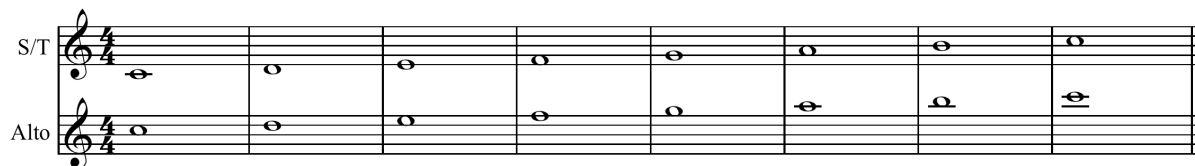
e natural minor



2. Play scales from memory in long tones, ascending only, holding each note with a steady tone for four beats.

Sample scale in long tones

M.M. ♩ = 80



3. Recognize the key signatures for the scales and arpeggios for this level: C, F, G majors and their relative natural minors. Be able to notate or identify notes by name in these keys.